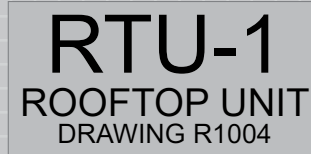


Aluminum Plates are highly durable and available in 6 color combinations. They are laser etched creating highly detailed and lasting images. Excellent for smaller text, drawings, images or bar codes.

Aluminum Nameplate Examples



Nameplate size: 1 x 4 in
0.5 in text size (sized to fit also available)



Nameplate Size: 2 x 4 in
Row one - 3/4 in text size
Row two - 3/8 in text size
Row three - 1/4 in text size



Nameplate Size: 2 x 3 in
Row one - 3/8 in text size
Row two - 3/4 in text size
Row three and four - 3/16 in text size





Nameplate Size: 2.5 x 4 in
1/2 in text size (sized to fit also available)

These images are for approximate representation only.

Nameplate Sizes	
3/4 x 2-1/2 in (19 x 64 mm)	3 x 5 in (76 x 127 mm)
1 x 2 in (25 x 51 mm)	3 x 6 in (76 x 152 mm)
1 x 3 in (25 x 76 mm)	4 x 6 in (102 x 152 mm)
1 x 4 in (35 x 102 mm)	4 x 8 in (102 x 203.2 mm)
1-1/2 x 4 in (38 x 102 mm)	4 x 12 in (102 x 304.8 mm)
2 x 3 in (51 x 76 mm)	6 x 12 in (152 x 304.8 mm)
2 x 4 in (51 x 102 mm)	8 x 12 in (203.2 x 304.8 mm)
2-1/2 x 4 in (64 x 102 mm)	12 x 12 in (304.8 x 304.8 mm)
2 x 6 in (51 x 152 mm)	12 x 18 in (304.8 x 457.2 mm)
3 x 4 in (76 x 102 mm)	Custom Size Required

Text Sizes	Number of Lines			
	1	2	3	4
Sized to fit nameplate				
3/16 in (4.7625 mm)				
1/4 in (6.35 mm)				
3/8 in (9.525 mm)				
1/2 in (12.7 mm)				
3/4 in (19.05 mm)				
1 in (25.4 mm)				
Other				

Mounting Options	
	Corner Holes
	Holes Centered Left & Right
	Top Corner Holes
	Holes Centered Top & Bottom
	Adhesive Backing <small>May combine with any option above</small>

Codes	
Barcode	
QR Code	

Colors	
	WHITE/BLACK
	BLACK/WHITE
	NATURAL/RED
	NATURAL/BLUE
	BLACK/ALUMIN
	NATURAL/BLACK

Installation Instructions	For adhesive backing applied to a clean dry surface above 50°F (10°C)
Service Temp	-200°F to 1400°F (-128°C to 760°C)
Water Resistance	Excellent
Finish	Gloss
Material Properties	24 Gauge (0.020"/0.508 mm thick) Aluminum
Text:	Laser Etched, Letter Finish depending on Substrate color
Installation Options	Adhesive backing, Holes and Adhesive Backing, Magnetic backing
Hole Options	One hole each side centered, holes in corners, holes in top corners
Adhesive Properties	4-mil Acrylic Adhesive
Storage Stability	Indefinite when stored at 70°F (21°C) and 50% RH
Outdoor Durability	Excellent
Chemical Resistance	Excellent
Equivalent To	Seton Engraved Aluminum Equipment Nameplates, Marking Services Aluminum Valve and Equipment Tags, Brady Aluminum Nameplates

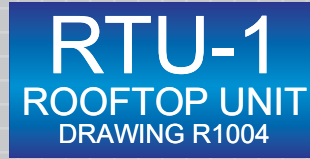
DATE	MM	DD	YYYY	JOB
CONTRACTOR NAME				

Manufactured for specialized projects requiring the high durability and properties of stainless steel. The plates are laser etched Anodized Aluminum Plates are highly durable and available in 8 color combinations. They are laser etched creating highly detailed and lasting images. Excellent for smaller text, drawings, images or bar codes. d creating highly detailed and lasting images. Excellent for smaller text, drawings, images or bar codes.

Anodized Aluminum Nameplate Examples



Nameplate size: 1 x 4 in
0.5 inch text size (sized to fit also available)



Nameplate Size: 2 x 4 in
Row one - 3/4 inch text size
Row two - 3/8 inch text size
Row three - 1/4 inch text size



Nameplate Size: 2 x 3 in
Row one - 3/8 inch text size
Row two - 3/4 inch text size
Row three and four - 3/16 inch text



Nameplate Size: 2.5 x 4 in
1/2 inch text size (sized to fit also available)

These images are for approximate representation only.

Nameplate Sizes	
3/4 x 2-1/2 in (19 x 64 mm)	3 x 5 in (76 x 127 mm)
1 x 2 in (25 x 51 mm)	3 x 6 in (76 x 152 mm)
1 x 3 in (25 x 76 mm)	4 x 6 in (102 x 152 mm)
1 x 4 in (35 x 102 mm)	4 x 8 in (102 x 203.2 mm)
1-1/2 x 4 in (38 x 102 mm)	4 x 12 in (102 x 304.8 mm)
2 x 3 in (51 x 76 mm)	6 x 12 in (152 x 304.8 mm)
2 x 4 in (51 x 102 mm)	8 x 12 in (203.2 x 304.8 mm)
2-1/2 x 4 in (64 x 102 mm)	12 x 12 in (304.8 x 304.8 mm)
2 x 6 in (51 x 152 mm)	12 x 18 in (304.8 x 457.2 mm)
3 x 4 in (76 x 102 mm)	Custom Size Required

Text Sizes	Number of Lines			
	1	2	3	4
Sized to fit nameplate				
3/16 in (4.7625 mm)				
1/4 in (6.35 mm)				
3/8 in (9.525 mm)				
1/2 in (12.7 mm)				
3/4 in (19.05 mm)				
1 in (25.4 mm)				
Other				

Mounting Options	
	Corner Holes
	Holes Centered Left & Right
	Top Corner Holes
	Holes Centered Top & Bottom
	Adhesive Backing <small>May combine with any option above</small>

Codes	
Barcode	
QR Code	

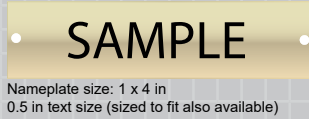
Colors	
	WHITE/BLACK
	WHITE/GOLD
	WHITE/RED
	WHITE/BLUE
	WHITE/ORANGE
	WHITE/GREEN
	WHITE/ALUMIN
	BLACK/ALUMIN

Installation Instructions	For adhesive backing applied to a clean dry surface above 50°F (10°C)
Service Temp	-200°F to 1400°F (-128°C to 760°C)
Water Resistance	Excellent
Finish	Brushed Gloss
Material Properties	20 Gauge (0.032"/0.812 mm thick) Anodized Aluminum
Text	Laser Etched White Finish, *Digital print for black text
Installation Options	Adhesive backing, Holes and Adhesive Backing, Magnetic backing
Hole Options	one hole each side centered, holes in corners, holes in top corners
Adhesive Properties	4-mil Acrylic Adhesive
Storage Stability	Indefinite when stored at 70°F (21°C) and 50% RH
Outdoor Durability	Excellent
Chemical Resistance	Excellent
Equivalent To	Seton Laser Etched Anodized Aluminum, Marking Services Inc. Anodized Aluminum Tags, Brady Anodized Aluminum Valve Tags

DATE	MM	DD	YYYY	JOB
CONTRACTOR NAME				

Manufactured for specialized projects requiring the high durability and properties of Brass. The plates are laser etched creating highly detailed and lasting images. Excellent for samller text, drawings, images or bar codes.

Digitally Printed Brass Nameplate Examples



Nameplate size: 1 x 4 in
0.5 in text size (sized to fit also available)



Nameplate Size: 2 x 4 in
Row one - 3/4 in text size
Row two - 3/8 in text size
Row three - 1/4 in text size



Nameplate Size: 2 x 3 in
Row one - 3/8 in text size
Row two - 3/4 in text size
Row three and four - 3/16 in text size





Nameplate Size: 2.5 x 4 in
1/2 in text size (sized to fit also available)

These images are for approximate representation only.

Nameplate Sizes			
3/4 x 2-1/2 in (19 x 64 mm)		3 x 5 in (76 x 127 mm)	
1 x 2 in (25 x 51 mm)		3 x 6 in (76 x 152 mm)	
1 x 3 in (25 x 76 mm)		4 x 6 in (102 x 152 mm)	
1 x 4 in (35 x 102 mm)		4 x 8 in (102 x 203.2 mm)	
1-1/2 x 4 in (38 x 102 mm)		4 x 12 in (102 x 304.8 mm)	
2 x 3 in (51 x 76 mm)		6 x 12 in (152 x 304.8 mm)	
2 x 4 in (51 x 102 mm)		8 x 12 in (203.2 x 304.8 mm)	
2-1/2 x 4 in (64 x 102 mm)		12 x 12 in (304.8 x 304.8 mm)	
2 x 6 in (51 x 152 mm)		12 x 18 in (304.8 x 457.2 mm)	
3 x 4 in (76 x 102 mm)		Custom Size Required	

Text Sizes	Number of Lines			
	1	2	3	4
Sized to fit nameplate				
3/16 in (4.7625 mm)				
1/4 in (6.35 mm)				
3/8 in (9.525 mm)				
1/2 in (12.7 mm)				
3/4 in (19.05 mm)				
1 in (25.4 mm)				
Other				

Mounting Options	
<input type="checkbox"/>	Corner Holes
<input type="checkbox"/>	Holes Centered Left & Right
<input type="checkbox"/>	Top Corner Holes
<input type="checkbox"/>	Holes Centered Top & Bottom
<input type="checkbox"/>	Adhesive Backing <small>May combine with any option above</small>

Codes	
<input type="checkbox"/>	Barcode 
<input type="checkbox"/>	QR Code 

Installation Instructions	For adhesive backing applied to a clean dry surface above 50°F (10°C)
Service Temp	Up to 1200°F (648°C)
Water Resistance	Excellent
Finish	Glossy Brass Finish
Material Properties	19 gauge brass (.036 in/0.914 mm)
Material Options	Other grades and finished of brass available upon request.
Text	UV resistant digitally printed black text with scratch resistant clear coat.
Installation Options	Adhesive backing, holes and adheisve backing, magnetic backing
Hole Options	One hole each side centered, holes in corners, holes in top corners *create check box for these
Adhesive Properties	4-mil acrylic adhesive, adhesive rated from -40°F to 175° F (-40°C to 79.45°C)
Storage Stability	Indefinite when stored at 70°F (21°C) and 50% RH
Outdoor Durability	Excellent
Color Options	Full color process printing available upon request.
Chemical Resistance	Excellent
Equivalent To	Seton Brass Nampelates, Marking Services Brass Tags, Brady Brass Namepates

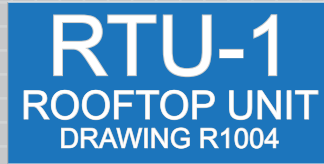
DATE	MM	DD	YYYY	JOB
CONTRACTORNAME				

Kolbi Engraved Nameplates are designed to meet exact project requirements. These highly durable plates are available in the most commonly used sizes or custom-made to meet a specific need. There are five standard materials, all with beveled edges for a precise and professional look. Precision engraving equipment produces the exact letter size and font needed for optimal viewing from any distance. Ability to vary letter size by line creates plates that are easier to read and meet exact project specifications.

Engraved Plastic Nameplate Examples



Nameplate size: 1 x 4 in
0.5 inch text size (sized to fit also available)



Nameplate Size: 2 x 4 in
Row one - 3/4 inch text size
Row two - 3/8 inch text size
Row three - 1/4 inch text size



Nameplate Size: 2 x 3 in
Row one - 3/8 inch text size
Row two - 3/4 inch text size
Row three & four - 3/16 inch text size



Nameplate Size: 2.5 x 4 in
1/2 inch text size (sized to fit also available)

These images are for approximate representation only.

Nameplate Sizes	
3/4 x 2-1/2 in (19 x 64 mm)	3 x 5 in (76 x 127 mm)
1 x 2 in (25 x 51 mm)	3 x 6 in (76 x 152 mm)
1 x 3 in (25 x 76 mm)	4 x 6 in (102 x 152 mm)
1 x 4 in (35 x 102 mm)	4 x 8 in (102 x 203.2 mm)
1-1/2 x 4 in (38 x 102 mm)	4 x 12 in (102 x 304.8 mm)
2 x 3 in (51 x 76 mm)	6 x 12 in (152 x 304.8 mm)
2 x 4 in (51 x 102 mm)	8 x 12 in (203.2 x 304.8 mm)
2-1/2 x 4 in (64 x 102 mm)	12 x 12 in (304.8 x 304.8 mm)
2 x 6 in (51 x 152 mm)	12 x 18 in (304.8 x 457.2 mm)
3 x 4 in (76 x 102 mm)	Custom Size Required

Colors	
	WHITE/BLACK
	BLACK/WHITE
	WHITE/RED
	WHITE/BLUE
	BLACK/ORANGE
	WHITE/GREEN
	RED/WHITE
	WHITE/GREY
	BLACK/YELLOW

Text Sizes	Number of Lines			
	1	2	3	4
Sized to fit nameplate				
3/16 in (4.7625 mm)				
1/4 in (6.35 mm)				
3/8 in (9.525 mm)				
1/2 in (12.7 mm)				
3/4 in (19.05 mm)				
1 in (25.4 mm)				
Other				

Materials	
	1/16" 2-ply Plastic
	1/16" Outdoor Material
	1/16" 3-Ply Material
	1/8" 2-ply Plastic
	1/8" Outdoor Grade Plastic
	1/8" 3-ply Material
Mounting Options	
	Corner Holes
	Holes Centered Left & Right
	Top Corner Holes
	Holes Centered Top & Bottom
	Adhesive Backing <small>May combine with any option above</small>

Installation Instructions	For adhesive backing applied to a clean dry surface above 50°F (10°C)
Service Temp	-40°F to 200°F (-40°C to 93°C)
Water Resistance	Good
Finish	Matte
Material Properties	Impact acrylic
Material options	1/16"(1.6mm), 1/8"(3mm) , 3ply (double sided)
UV resistant option	UV resistant option available for some colors
Installation Options	Adhesive backing, holes and adhesive backing, magnetic backing
Hole Options	One hole each side centered, holes in corners, holes in top corners
Adhesive Properties	4-Mil acrylic adhesive, adhesive rated from -40°F to 175° F (-40°C to 79.45°C)
Storage Stability	Indefinite when stored at 70°F (21°C) and 50% rh
Outdoor Durability	4 - 6 Years (UV Resistant Material 15+ years)
Chemical Resistance	Resistant to acids, alkalis and salts
Equivalent To	Seton Setonflex, Brimar Briply, Marking Services Inc. Ms-264, Brady Engraved Plastic Nameplates

DATE	MM	DD	YYYY	JOB
CONTRACTOR NAME				

Manufactured for specialized projects requiring the high durability and properties of stainless steel. The plates are laser etched creating highly detailed and lasting images. Excellent for samller text, drawings, images or bar codes.

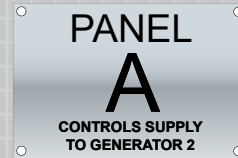
Stainless Steel Nameplate Examples



Nameplate size: 1 x 4 in
0.5 in text size (sized to fit also available)



Nameplate Size: 2 x 4 in
Row one - 3/4 in text size
Row two - 3/8 in text size
Row three - 1/4 in text size



Nameplate Size: 2 x 3 in
Row one - 3/8 in text size
Row two - 3/4 in text size
Row three and four - 3/16 in text size





Nameplate Size: 2.5 x 4 in
1/2 in text size (sized to fit also available)

These images are for approximate representation only.

Nameplate Sizes			
	3/4 x 2-1/2 in (19 x 64 mm)		3 x 5 in (76 x 127 mm)
	1 x 2 in (25 x 51 mm)		3 x 6 in (76 x 152 mm)
	1 x 3 in (25 x 76 mm)		4 x 6 in (102 x 152 mm)
	1 x 4 in (35 x 102 mm)		4 x 8 in (102 x 203.2 mm)
	1-1/2 x 4 in (38 x 102 mm)		4 x 12 in (102 x 304.8 mm)
	2 x 3 in (51 x 76 mm)		6 x 12 in (152 x 304.8 mm)
	2 x 4 in (51 x 102 mm)		8 x 12 in (203.2 x 304.8 mm)
	2-1/2 x 4 in (64 x 102 mm)		12 x 12 in (304.8 x 304.8 mm)
	2 x 6 in (51 x 152 mm)		12 x 18 in (304.8 x 457.2 mm)
	3 x 4 in (76 x 102 mm)		Custom Size Required

Text Sizes	Number of Lines			
	1	2	3	4
Sized to fit nameplate				
3/16 in (4.7625 mm)				
1/4 in (6.35 mm)				
3/8 in (9.525 mm)				
1/2 in (12.7 mm)				
3/4 in (19.05 mm)				
1 in (25.4 mm)				
Other				

Mounting Options	
<input type="checkbox"/>	Corner Holes
<input type="checkbox"/>	Holes Centered Left & Right
<input type="checkbox"/>	Top Corner Holes
<input type="checkbox"/>	Holes Centered Top & Bottom
<input type="checkbox"/>	Adhesive Backing <small>May combine with any option above</small>

Codes	
<input type="checkbox"/>	Barcode 
<input type="checkbox"/>	QR Code 

Installation Instructions	For adhesive backing applied to a clean dry surface above 50°F (10°C)
Service Temp	Up to 2700°F (1482°C)
Water Resistance	Excellent
Finish	Brush natural stainless steel
Material Properties	22 Gauge (.030in/0.762mm thick) 316 stainless steel
Material Options	Other grades and finished of stainless steel available
Text	Laser etched dark grey to black finish
Installation Options	Adhesive backing, holes and adheisve backing, magnetic backing
Hole Options	One hole each side centered, holes in corners, holes in top corners *create check box for these
Adhesive Properties	4-mil acrylic adhesive, adhesive rated from -40°F to 175° F (-40°C to 79.45°C)
Storage Stability	Indefinite when stored at 70°F (21°C) and 50% RH
Outdoor Durability	Excellent
Other Finishes	Rust resistant gloss coat available
Chemical Resistance	Excellent
Equivalent To	Seton Stainless Steel Nampelates, Marking Services Stainless Steel Tags, Brady Stainless Steel Namepates

DATE	MM	DD	YYYY	JOB
CONTRACTOR NAME				