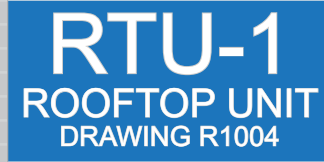


Kolbi Engraved Nameplates are designed to meet exact project requirements. These highly durable plates are available in the most commonly used sizes or custom-made to meet a specific need. There are five standard materials, all with beveled edges for a precise and professional look. Precision engraving equipment produces the exact letter size and font needed for optimal viewing from any distance. Ability to vary letter size by line creates plates that are easier to read and meet exact project specifications.

### Engraved Plastic Nameplate Examples



**Nameplate size: 1 x 4 in**  
0.5 inch text size (sized to fit also available)



**Nameplate Size: 2 x 4 in**  
Row one - 3/4 inch text size  
Row two - 3/8 inch text size  
Row three - 1/4 inch text size



**Nameplate Size: 2 x 3 in**  
Row one - 3/8 inch text size  
Row two - 3/4 inch text size  
Row three & four - 3/16 inch text size



**Nameplate Size: 2.5 x 4 in**  
1/2 inch text size (sized to fit also available)

*These images are for approximate representation only.*

Nameplate Sizes	
3/4 x 2-1/2 in (19 x 64 mm)	3 x 5 in (76 x 127 mm)
1 x 2 in (25 x 51 mm)	3 x 6 in (76 x 152 mm)
1 x 3 in (25 x 76 mm)	4 x 6 in (102 x 152 mm)
1 x 4 in (35 x 102 mm)	4 x 8 in (102 x 203.2 mm)
1-1/2 x 4 in (38 x 102 mm)	4 x 12 in (102 x 304.8 mm)
2 x 3 in (51 x 76 mm)	6 x 12 in (152 x 304.8 mm)
2 x 4 in (51 x 102 mm)	8 x 12 in (203.2 x 304.8 mm)
2-1/2 x 4 in (64 x 102 mm)	12 x 12 in (304.8 x 304.8 mm)
2 x 6 in (51 x 152 mm)	12 x 18 in (304.8 x 457.2 mm)
3 x 4 in (76 x 102 mm)	Custom Size Required

Colors	
	WHITE/BLACK
	BLACK/WHITE
	WHITE/RED
	WHITE/BLUE
	BLACK/ORANGE
	WHITE/GREEN
	RED/WHITE
	WHITE/GREY
	BLACK/YELLOW

Text Sizes	Number of Lines			
	1	2	3	4
Sized to fit nameplate				
3/16 in (4.7625 mm)				
1/4 in (6.35 mm)				
3/8 in (9.525 mm)				
1/2 in (12.7 mm)				
3/4 in (19.05 mm)				
1 in (25.4 mm)				
Other				

Materials	
	1/16" 2-ply Plastic
	1/16" Outdoor Material
	1/16" 3-Ply Material
	1/8" 2-ply Plastic
	1/8" Outdoor Grade Plastic
	1/8" 3-ply Material

Mounting Options	
	Corner Holes
	Holes Centered Left & Right
	Top Corner Holes
	Holes Centered Top & Bottom
	Adhesive Backing <small>May combine with any option above</small>

<b>Installation Instructions</b>	For adhesive backing applied to a clean dry surface above 50°F (10°C)
<b>Service Temp</b>	-40°F to 200°F (-40°C to 93°C)
<b>Water Resistance</b>	Good
<b>Finish</b>	Matte
<b>Material Properties</b>	Impact acrylic
<b>Material options</b>	1/16"(1.6mm), 1/8"(3mm), 3ply (double sided)
<b>UV resistant option</b>	UV resistant option available for some colors
<b>Installation Options</b>	Adhesive backing, holes and adhesive backing, magnetic backing
<b>Hole Options</b>	One hole each side centered, holes in corners, holes in top corners
<b>Adhesive Properties</b>	4-Mil acrylic adhesive, adhesive rated from -40°F to 175°F (-40°C to 79.45°C)
<b>Storage Stability</b>	Indefinite when stored at 70°F (21°C) and 50% rh
<b>Outdoor Durability</b>	4 - 6 Years (UV Resistant Material 15+ years)
<b>Chemical Resistance</b>	Resistant to acids, alkalis and salts
<b>Equivalent To</b>	Seton Setonflex, Brimar Briply, Marking Services Inc. Ms-264, Brady Engraved Plastic Nameplates

DATE	MM	DD	YYYY	JOB
CONTRACTOR NAME				